

# WILHELMINA

The Mechanical Marvel circa 1950

pedestrian operated, steering bar & controls inside head

head nods when in motion

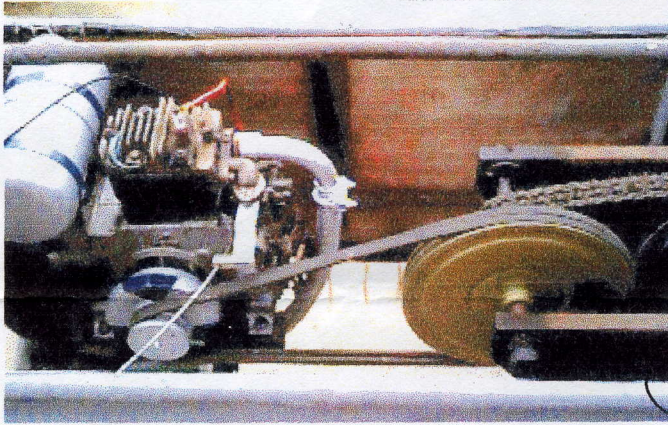
body constructed of papier- mache & canvas on a steel tubular frame



pedestrian operated, steering bar & controls inside head

window.  
so you can see the mechanics

rides on 8 small wheels



weighs around 400 lbs. 8ft 6" long 5ft 7" high

Inside, the J.A.P 4cycle petrol engine with centrifugal clutch and reduction pulleys

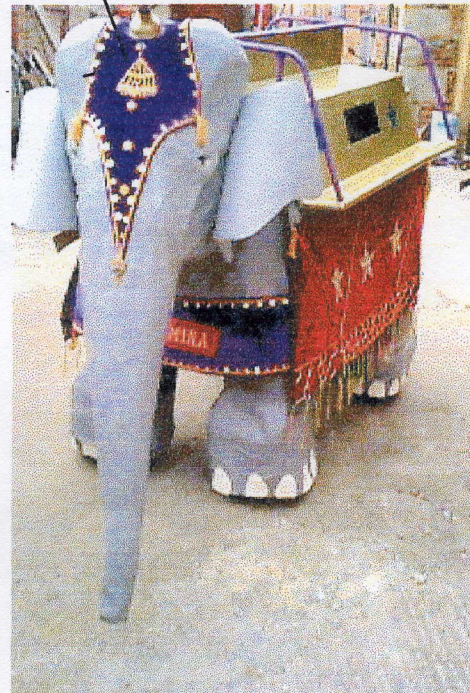
Decorated with authentic Indian jewellery and fine velvets

## A NEW LEASE OF LIFE !

Wilhelmina, the mechanical elephant is nearly 50 years old and getting ready to celebrate the millennium. Built by Frank Stuart Engineering of Thaxted, Essex in the early 50's, she served her time giving children rides on the promenades of famous north country seaside towns and later in the Belle Vue zoo Manchester. Recently restored, now sparkling with gold decoration, she is ready for more & FOR SALE around \$7,500 (£5,000 )

**FOR PARADES, CARNIVALS , PUBLICITY**  
*and amusement*

For more information contact John Hornby-Smith  
Tel(44) (0) 1985 840880 Fax (44)(0) 1985 840990  
E-mail [hornby.smith@btinternet.com](mailto:hornby.smith@btinternet.com)



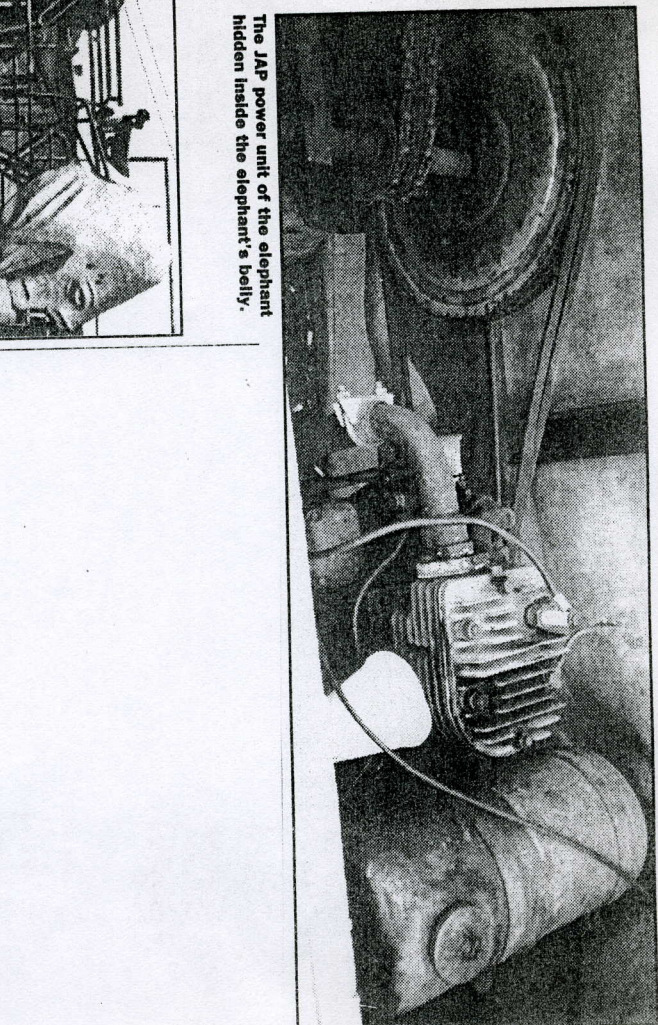




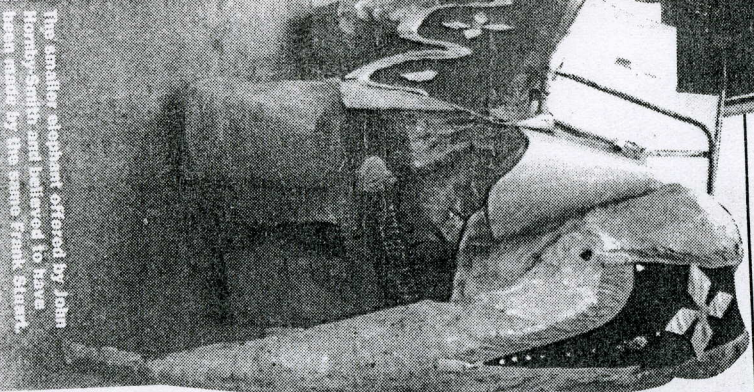


# Stuart Mechanicals

The Beaulieu walking elephant in full flight with a complement of passengers.



The JAP power unit of the elephant hidden inside the elephant's belly.



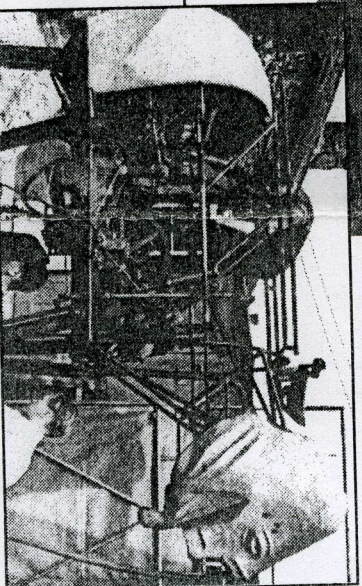
The smaller elephant offered by John Hornby-Smith and believed to have been made by the same Frank Stuart.

This was the strange trademark used by Frank Stuart of Bluegate Studios & The Worthingtons, Thaxted, Essex for the mechanised elephants he built back in the Forties or Fifties. One of them, in distressed condition, was sold at Beaulieu a while back, and has since been fully restored. Our reader John Hornby-Smith of Warrminster has recently driven (ridden?) it and confirms that it's now in full working order. It's practically full-size and weighs a ton - about a third of the weight of the Malayan prototype - and is powered by a Ford Eight engine mounted within its belly. A complicated system of levers articulates its legs, and it is capable, according to a contemporary report, of an amazing 27mph. Here you see it walking, with a full

complement of passengers. The 'driver' operates a gear lever mounted behind the elephant's head.

Frank Stuart actually issued a brochure, giving the full specification of this strange vehicle, and this vouchsafes that the four speed gearbox actually provided walking speeds of from two to twelve miles per hour, with a pneumatic reverse gear enabling the creature to walk backwards as well! The trunk swayed and the head nodded as the mechanical elephant progressed! Its height to the top of its head is 8' 6".

John (who has a remarkable nose for interesting 'finds') has unearthed a smaller (two thirds size) mechanical elephant believed to have been made by the same Frank Stuart, but of



The complicated framework of the Beaulieu elephant, showing the articulated legs and Ford Eight petrol engine amidships.

slightly less sophisticated design. It's powered by a single cylinder JAP four-stroke engine, operating via a centrifugal clutch and a series of reduction pulleys to double chains through the back legs to small wheelbarrow-type wheels. The elephant is pedestrian-operated, the driver steering with a bar mounted inside the head, with a motorcycle-type lever throttle to control speed. This smaller elephant will carry four children. If you're interested, contact John on 01985 840880, and a large colour picture can be seen on Internet Webb site <http://www.bntinternet.com/~bizarre.cars>.